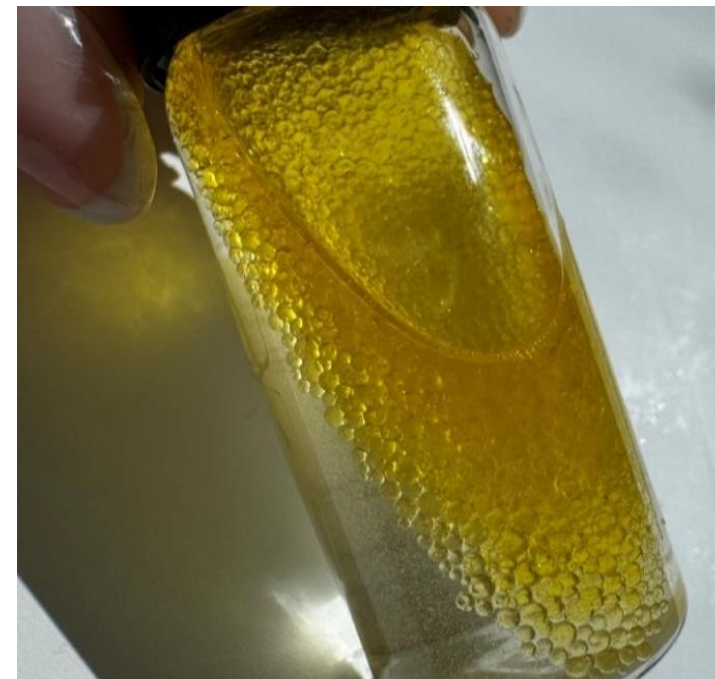


# Bi-Phase Night Serum

## Formulation reference: FM00330/A

Phase	Trade Name	INCI Ingredients	Function	% w/w	Supplier
A	Deionised Water	Aqua	Solvent	Up to 100%	
	Dissolvine NA2	Disodium EDTA	Chelating Agent	0.05	Brenntag
B	Vegetable Glycerine	Glycerin	Humectant	3.00	Special Ingredients
	Saccharide Isomerate Plus	Saccharide Isomerate, Aqua, Citric Acid, Sodium Citrate	Active	1.00	Aromatic
	Sodium Benzoate and Potassium Sorbate	Sodium Benzoate (and) Potassium Sorbate	Preservative	0.60	Naturally Thinking
	Kopsoyatol	Bacillus/ Saccharomyces/ Soybean Seed Ferment Filtrate (and) Glycerin (and) Lactobacillus/ Radish Root Ferment Extract Filtrate	Active/ Bioferment/ Antioxidant	2.00	Kumar Organics
C	Sodium Chloride	Sodium Chloride	Stabiliser	0.50	
D	Naissance Golden Jojoba Oil No 233	Simmondsia Chinensis (Jojoba) Seed Oil	Oil/ Moisturising	3.00	Naissance

Shake and apply this light, non-greasy, comforting and playful formula containing Kopsoyatol to enhance skin radiance and promote skin hydration. **Texique Lux5**, **Texiterra Sea Buckthorn Fruit Pulp Oil** and **Kalahari Melon Seed Oil** will provide extra nourishment for refreshed and smooth- feeling skin in the morning.



# Bi-Phase Night Serum

Phase	Trade Name	INCI Ingredients	Function	% w/w	Supplier
	Texique Lux5	C13-15 Alkane (and) Caprylic/ Capric Triglyceride	Natural Emollient	5.00	Scott Bader
	Texterra Sea Buckthorn Fruit Pulp Oil	Hippophae Rhamnoides (Sea Buckthorn) Fruit Oil	Oil/ Moisturising/ Colour	0.20	Scott Bader
	Texterra Kalahari Melon Seed Oil	Citrullus Lanatus (Watermelon Seed) Oil	Oil/ Moisturising	5.00	Scott Bader
	Grapeseed Oil EP9, Refined (K0214)	Vitis Vinifera (Grape) Seed Oil	Oil/ Moisturising	5.00	O&3
	Vitamin E (Tocopherol 70%)	Tocopherol (and) Helianthus annuus Seed Oil	Antioxidant	0.20	The Soap Kitchen
		Parfum	Fragrance	QS	
	Sodium Hydroxide 30% Solution		pH Adjuster	QS	

## Method

1. Weigh out deionised water and add the rest of phase A. Mix until fully dissolved.
2. Add phase B individually with mixing between additions.
3. Add phase C and mix until fully dissolved.
4. Measure and adjust pH to between 5.00 – 6.00.
5. In a separate vessel combine phase D with mixing between additions.
6. Pour both the water and oil phase into one container – they will separate into two differently coloured layers.
7. Shake before use.

The information in this publication is based on laboratory testing and is believed to be accurate and is given in good faith, but no representation or warranty as to its completeness or accuracy is made. Suggestions for uses or applications are only opinions and are not intended for design purposes. Users are responsible for determining the suitability of these products for their own particular purpose and assume all risk and liability whether used singly or in combination with other materials. No representation or warranty, expressed or implied, is made with respect to information or products including, without limitation, warranties of merchantability, fitness for a particular purpose, non-infringement of any third-party patent or other intellectual property rights.