



Personal Care

from **Scott Bader**



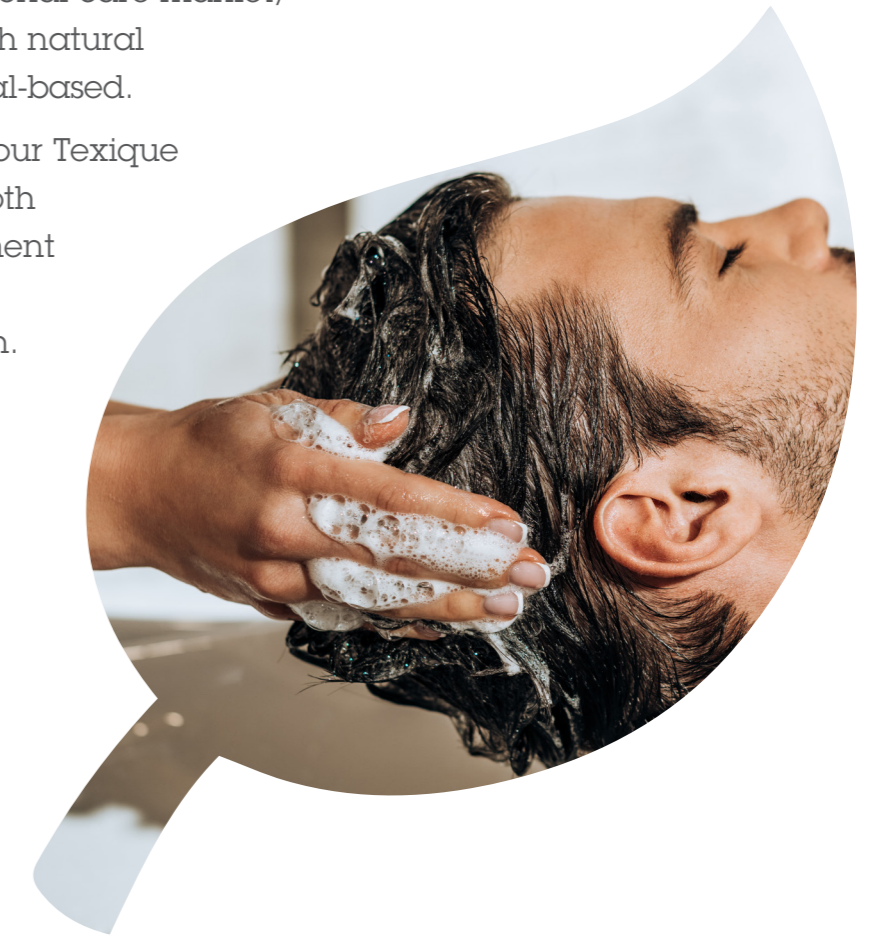
A range of bio-based and naturally derived ingredients for the personal care market.



About Texique

The Texique range of products includes high performing rheology modifiers, emulsifiers and conditioning agents for the personal care market, all manufactured to have a high natural index, none of which are animal-based.

Through conscious innovation, our Texique products are developed with both sustainability and the environment in mind, making a positive difference to every life we touch.



Contents

Texique 100% natural emollient	4
Texique anionic rheology modifiers	6
Texique anionic rheology data	8
Texiterra cold pressed oils	10
INCI names	12

Texique 100% natural emollient

Key characteristics of Texique Lux5

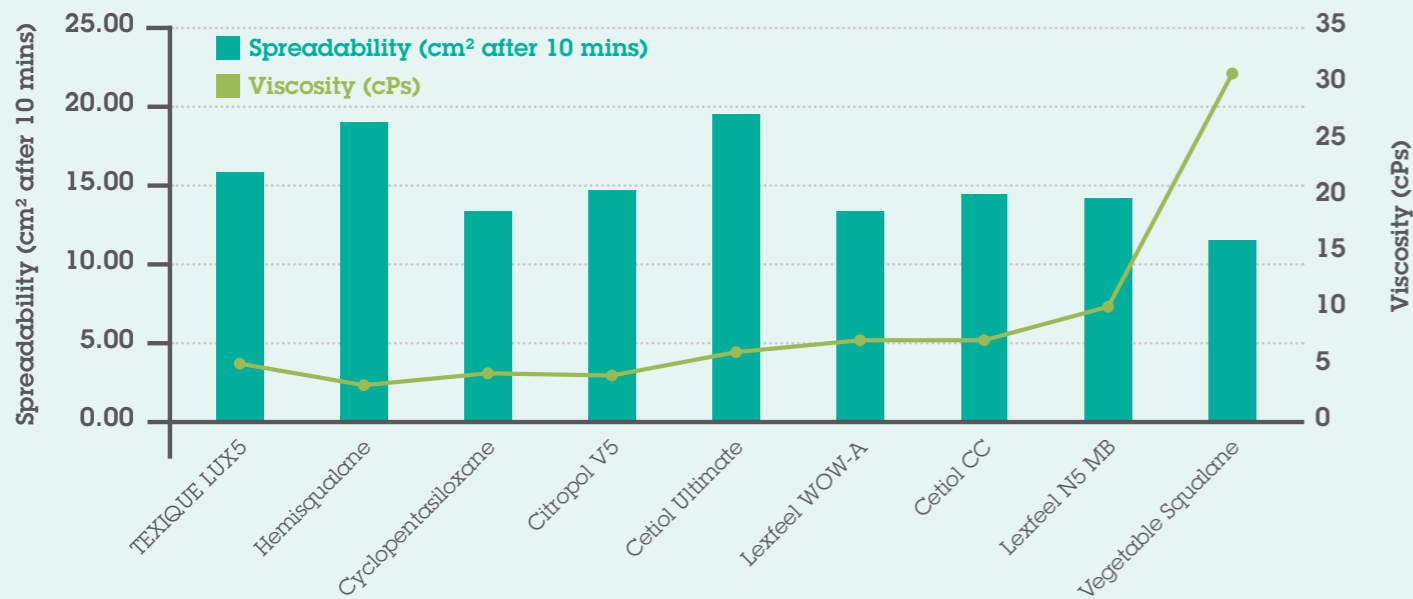
A 100% naturally derived silicone free and quick spreading light emollient for personal care applications, providing many of the sensory properties of low viscosity silicones.



Product	Natural Index	Natural Origin Index	Organic Index	Organic Origin Index
Lux5	0.20	1.00	0	0

High spreadability

Texique Lux5 shows high spreadability in comparison to Cyclopentasiloxane (D5) and comparable or better than many other naturally derived emollients as shown here.



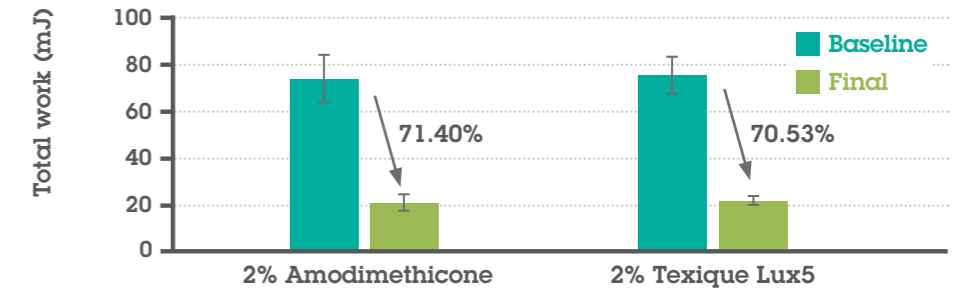
Easy combing

Texique Lux5 shows good wet and dry combability comparable to Amodimethicone when tested at 2% (as supplied) in a simple hair conditioner formulation. Over 70% reduction in combing forces was seen for wet combability and over 50% reduction for dry combability.

Texique Lux5 is a suitable natural alternative to silicone Amodimethicone helping to improve both wet and dry combing, thus enabling silicone free formulations.

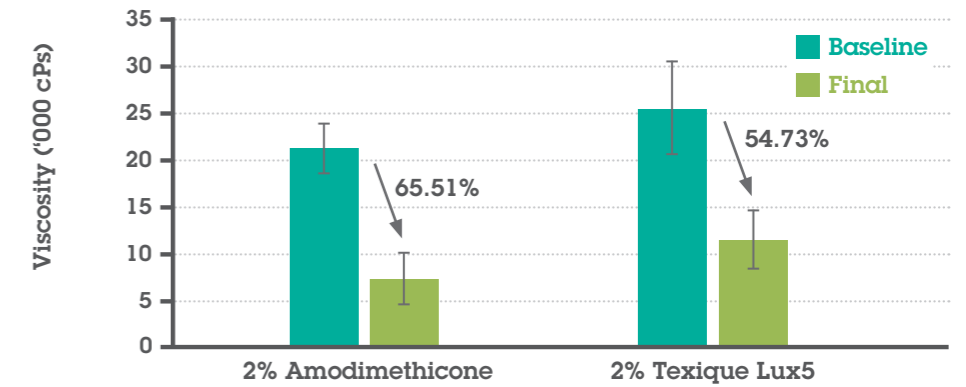
Wet combability

Comparison of total work for final and baseline measurements for wet combability.



Dry combability

Comparison of total work for final and baseline measurements for dry combability.



Comparison of make up removal

Texique Lux5 is a sustainable naturally derived alternative to leading silicone and petroleum-based ingredients for cosmetic make up removal formulations.

	Texique Lux5	Isododecane	Cyclopentasiloxane (D5)
Lipstick			
No treatment			
Foundation			
No treatment			
Mascara			
No treatment			

Texique Lux5 shows high cleansing ability against all make up items evaluated and better performance than Cyclopentasiloxane (D5). Isododecane is widely used but is petroleum derived. Texique Lux5 showed comparable cleansing performance to Isododecane for both lipstick and foundation, whilst Isododecane gave improved mascara removal.

Texique anionic rheology modifiers

Key characteristics of Texique HE10, HE20 and HE50

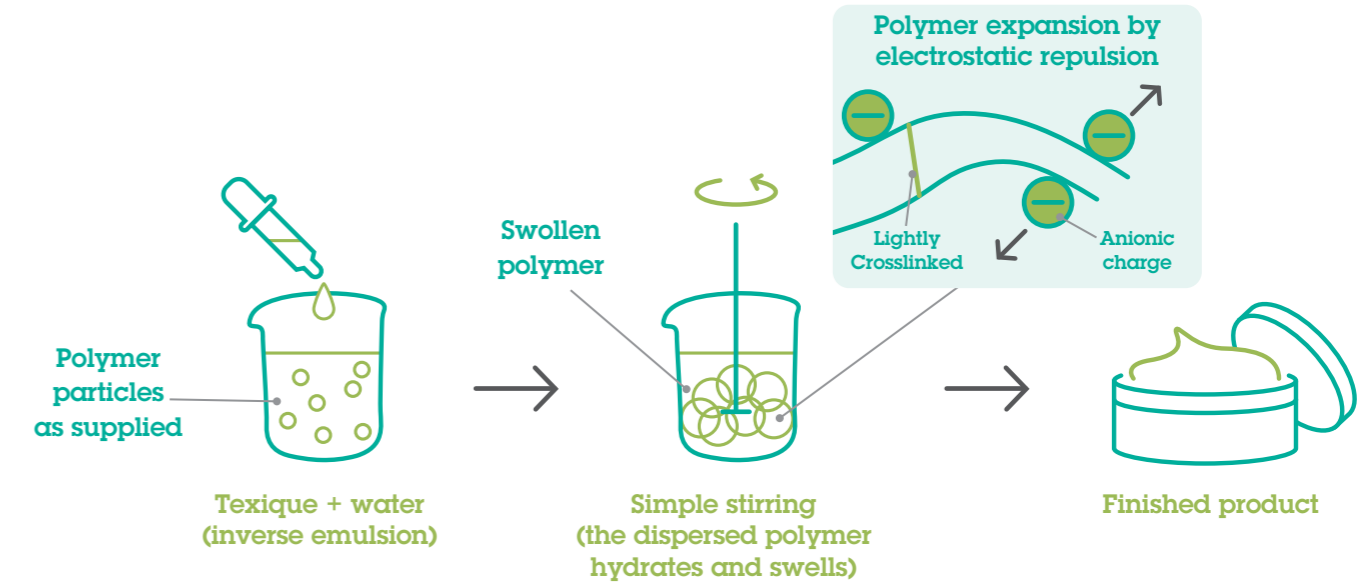
Multifunctional, providing thickening, stabilising, emulsifying and texturing properties.



How it works

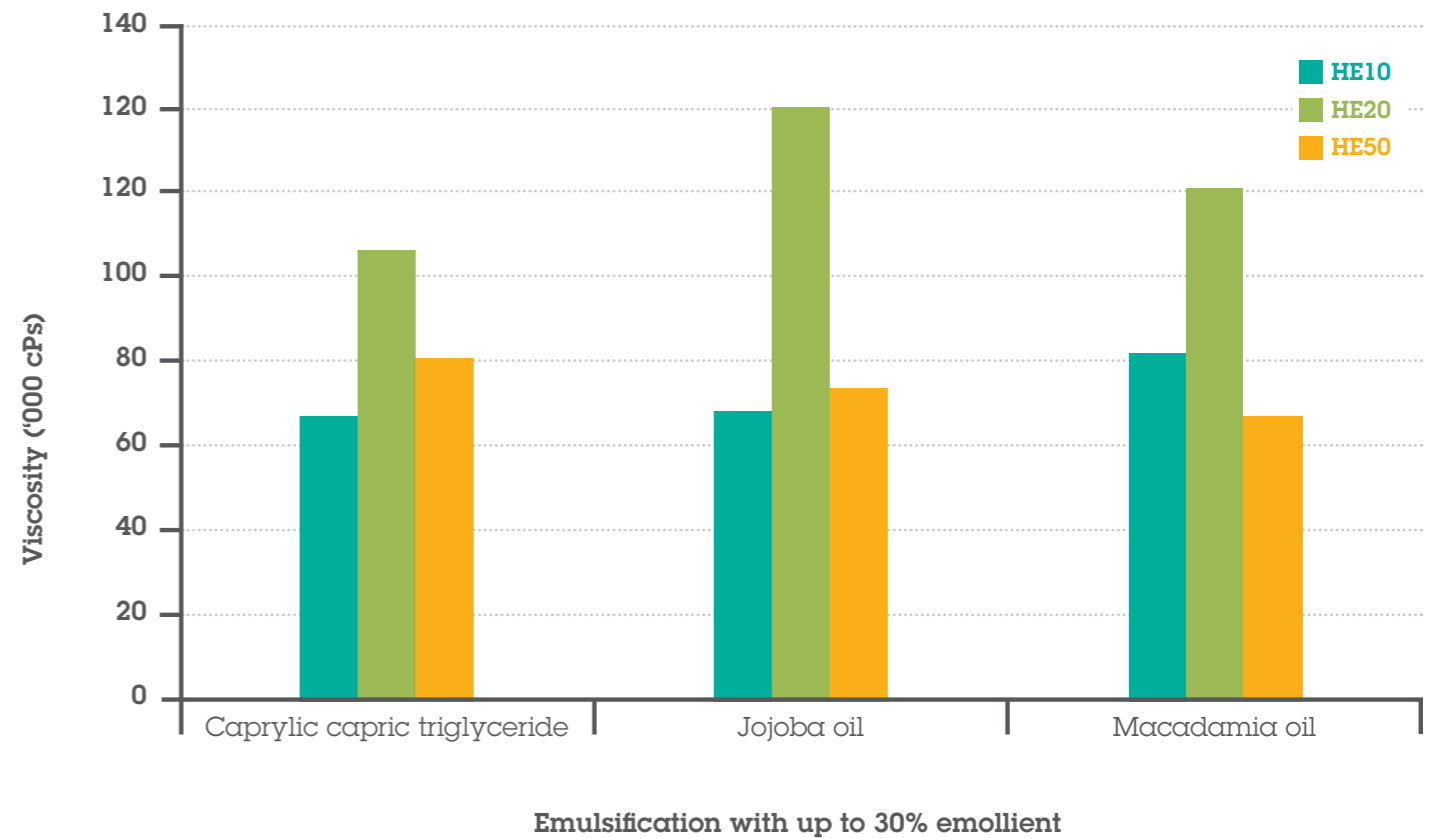
Texique is the ideal bio-based additive to create quality personal care products.



High performance and quality

Emulsification

High viscosity achieved with 30% emollient when using just 3% Texique products in water. Personal care products can be formulated into sprays or creams.



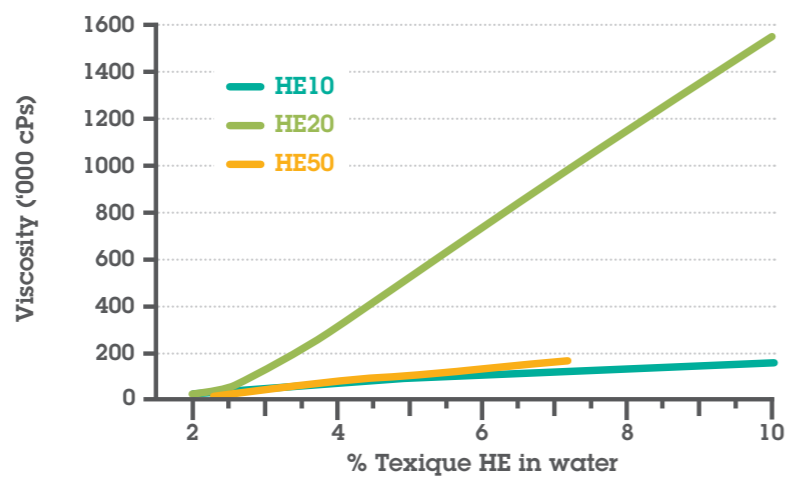
Product	NOI*	Thickening	pH Stability	Emulsification	Electrolyte resistance	Compliance	Key feature
HE10	62%	Good	5.50 - 11	Up to 40%	Very Good	Global	Emulsifier
HE20	61%	Excellent	4.00 - 11	Up to 30%	Good	Global -	Thickener
HE50	68%	Very Good	5.0 - 11	Up to 30%	Excellent	Global	Electrolyte resistance

*Natural Origin Index ISO16128. *



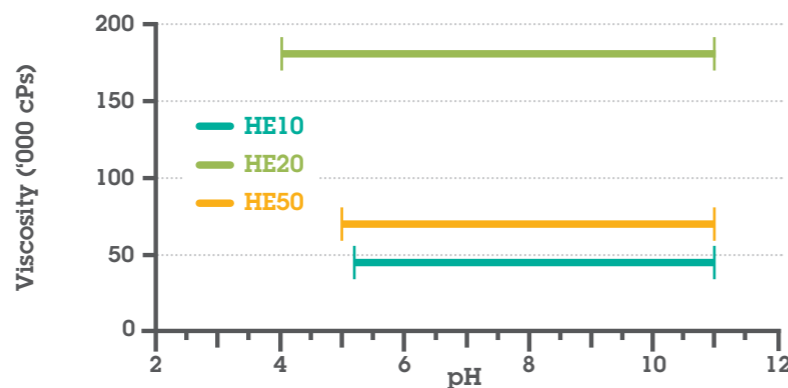
Thickening

Our patented technology ensures that Texique HE products deliver an excellent thickening range in water.



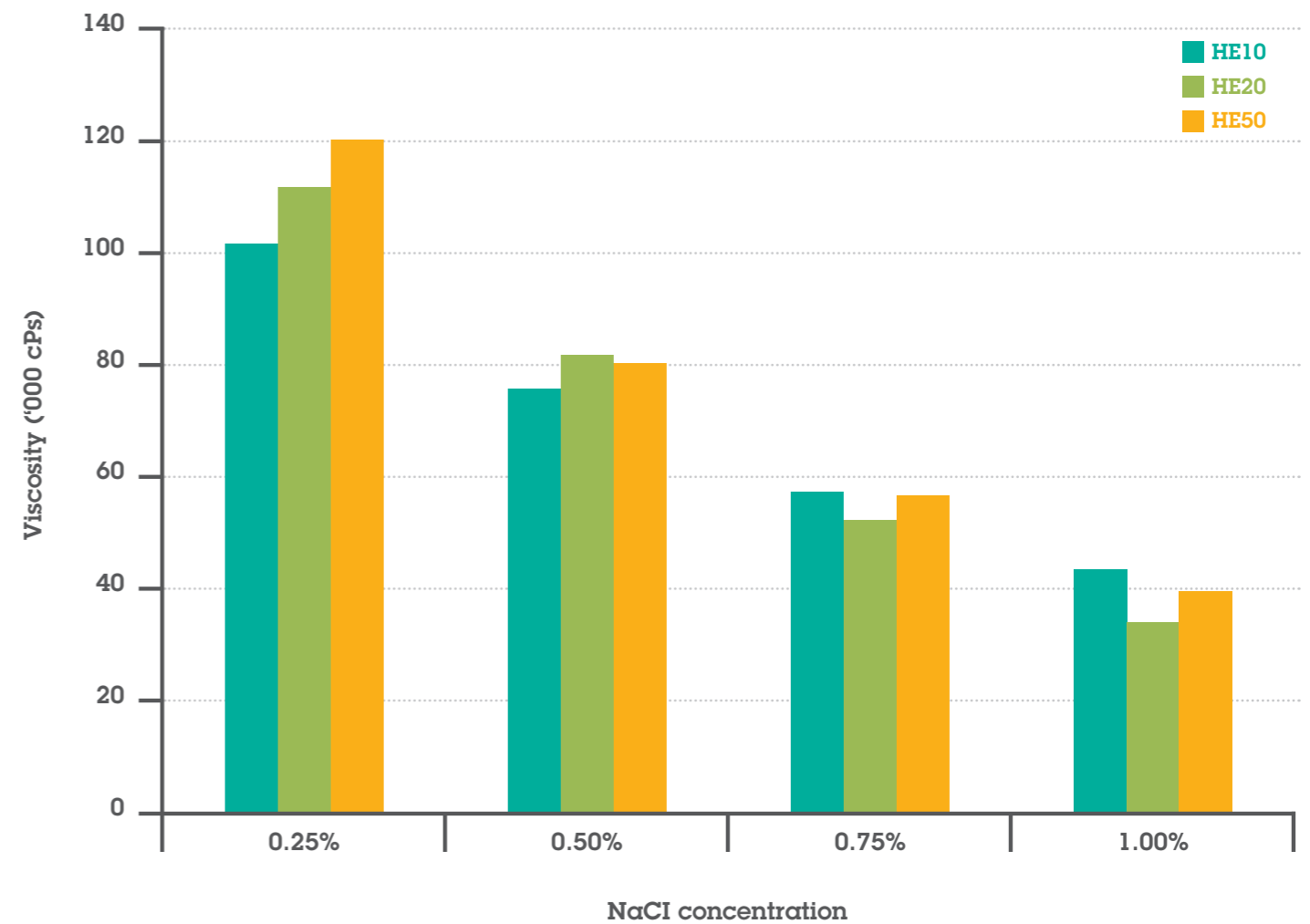
pH resistance

The pH effect on thickening when Texique is added to water at 3%.



Electrolyte resistance

Electrolyte resistance on thickening for the Texique HE range in water at 7%.



Example formulation using anionic rheology modifiers:

- 61.2% de-ionised water
- 0.8% preservative
- 3% Texique HE10
- 35% macadamia oil

Method:

- Weigh water and preservative into a beaker, mix well
- Add Texique HE10 to the stirring mixture at 800 rpm, mix for 10 minutes
- Add macadamia oil and stir for 20 minutes at 1000 rpm



Texiterra Cold Pressed Oils

Key characteristics of cold pressed African Oils

Sourced from selected African botanicals, these naturally derived oils bring nourishing benefits to skin and hair care formulations.

Ideal for products such as facial oils, body care, shampoos and conditioners, they help improve softness, moisture and sensory feel while adding a premium natural story.



Example formulation using cold pressed African oils:

- Up to 100% de-ionised water
- 0.6% preservative
- 5% Texiterra Kalahari Melon Seed oil
- 5% Texique Lux5

Method:

- Weigh water and preservative into a beaker, mix well
- In a separate vessel combine Texique Lux5 and cold pressed oil
- Pour both the water and oil phase into one container until they separate into two different layers. Shake before use.



Ethical partnerships through African oil supply

Our African oils supply partner was created to harvest and process wild harvested natural products. It's objective is to contribute to community development throughout Zimbabwe, particularly for women, by generating alternative production activities, employment opportunities and improved living conditions. This is achieved within a framework that protects and manages production in an ecologically sound manner.

A total of 2,437 farmers are actively involved in harvesting and selling fruit, seeds, nuts and plant materials, with 78% women and 22% men participating. Farmers are organised into village-based groups, creating a collaborative and transparent supply structure that supports traceability and shared economic benefit.



To ensure long-term sustainability and consistent quality, farmers receive ongoing training from our oil supply partner in:

- Sustainable harvesting techniques, designed to protect natural regeneration and prevent over-extraction
- Pre-processing methods, improving raw material handling and value retention at source
- Quality management practices, supporting reliable performance in downstream personal care applications





INCI names:

Lux5

C13-15 alkane, Caprylic/Capric Triglyceride

HE10

Sodium acrylate/sodium acryloyldimethyltaurate copolymer, C13-15 alkane, coco-glucoside

HE20

AMPS/HEMA cross polymer, C13-15 alkane, coco-glucoside

HE50

Acrylates/acrylamide copolymer, C13-15 alkane, Trideceth-7

Kalahari Melon Seed Oil

Citrullus lanatus (Watermelon Seed) Oil

Marula Oil

Sclerocarya Birrea Seed Oil

Seabuckthorn Fruit Pulp Oil

Hippophæ Rhamnoides Fruit Oil



Find your local Scott Bader office



[scottbader.com](https://www.scottbader.com)



Issue 7 - July 2024

INVESTORS IN PEOPLE®
We invest in people Gold